



PETECKI

Inspired by excellence

www.petecki.eu

Colour palette



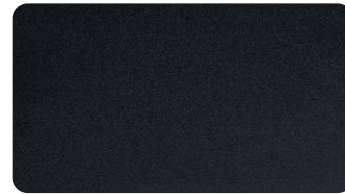
Basic Colours



Jet Black SFTN CC+



Dark grey



Dark Grey Silk



Slate grey



Slate Grey Smooth



Quartz Grey



Quartz Grey Smooth



Alux Aluminium Grey



Basalt grey



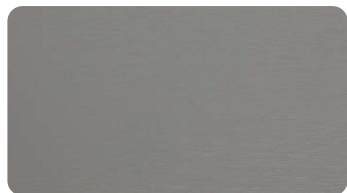
Basalt Grey Smooth



Silver grey



Silver Grey Smooth



Light grey



Agate grey



Earl Platinum



Crown platinum

Basic Colours



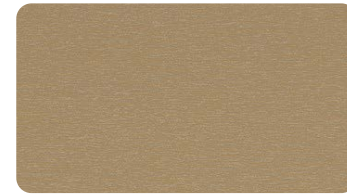
Platinum Quartz



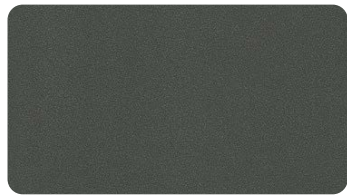
Brushed aluminium



Aluminium Brushed Silver



Brushed brass



Alux DB 703



Navy blue



Cobalt blue



Brilliant Blue



Monumental Green



Green



Dark Green



Maroon



Red-Brown



Ruby Red

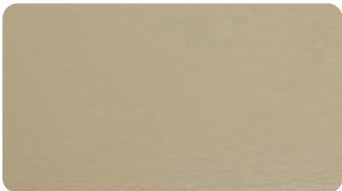


Yellow



Papyrus-White

Basic Colours



Ivory



Creamy White



White

Woodgrain Colours



Black Brown



Macore



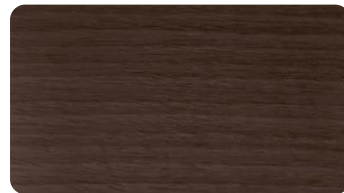
Bronze



Swamp Oak



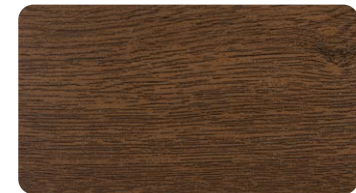
Mahogany



Siena PN Noce



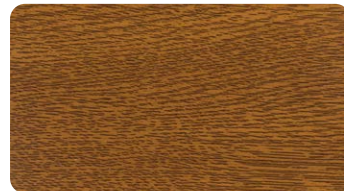
Siena PR Rosso



Walnut



Rustic Oak



Golden Oak



Douglas Fir Shaded



Douglas fir



Winchester XA



Shogun AD



Shogun AF



Mountain Pine

Woodgrain Colours



Oregon III



Light oak



Sheffield oak Bright



Sheffield oak grey



Glued Oak

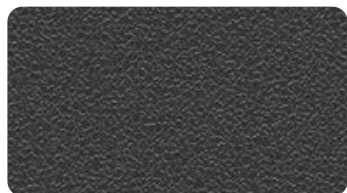


Honey Glued Oak Super Matt



Glulam Oak Super Matt

Fine Structure Colours



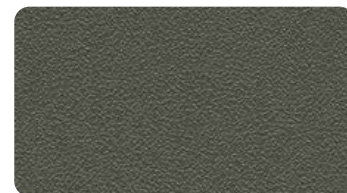
Dark grey



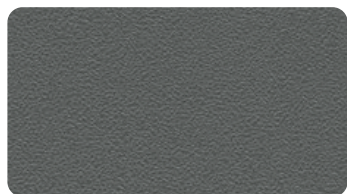
Black



Slate grey



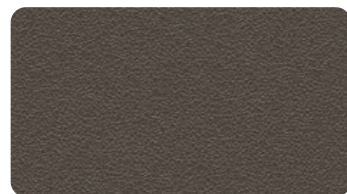
Quartz grey



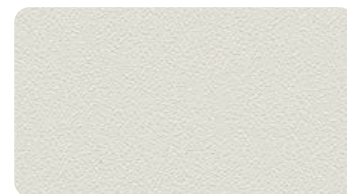
Basalt grey



Silver grey



Umбра

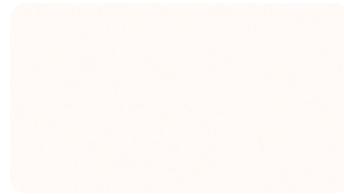


White

Spectral Colours



Anthracite Ultramatte



White Ultramatte



Dark green Ultramatte



Oak Tender Antique Ultramatte*



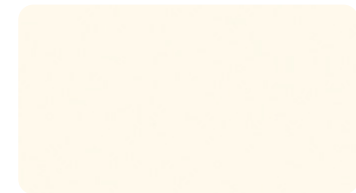
Oak Tender White Ultramatte*



Oak Tender Grey Ultramatte*



Graphite grey Ultramatte



Milky white Ultramatte



Platinum Grey Ultramatte



Sepia Brown Ultramatte



Umbra Ultramat

| *Available while supplies last in 2025

PLEASE NOTE: The full range of colours, including non-standard veneers, is available in our showrooms and in the sales network of our Business Partners. The presented graphic materials are for illustrative purposes only and the actual colours and textures of the products may differ from those shown in the advertising materials. The presented graphics, including the presentation of colours, can not constitute grounds for a complaint.